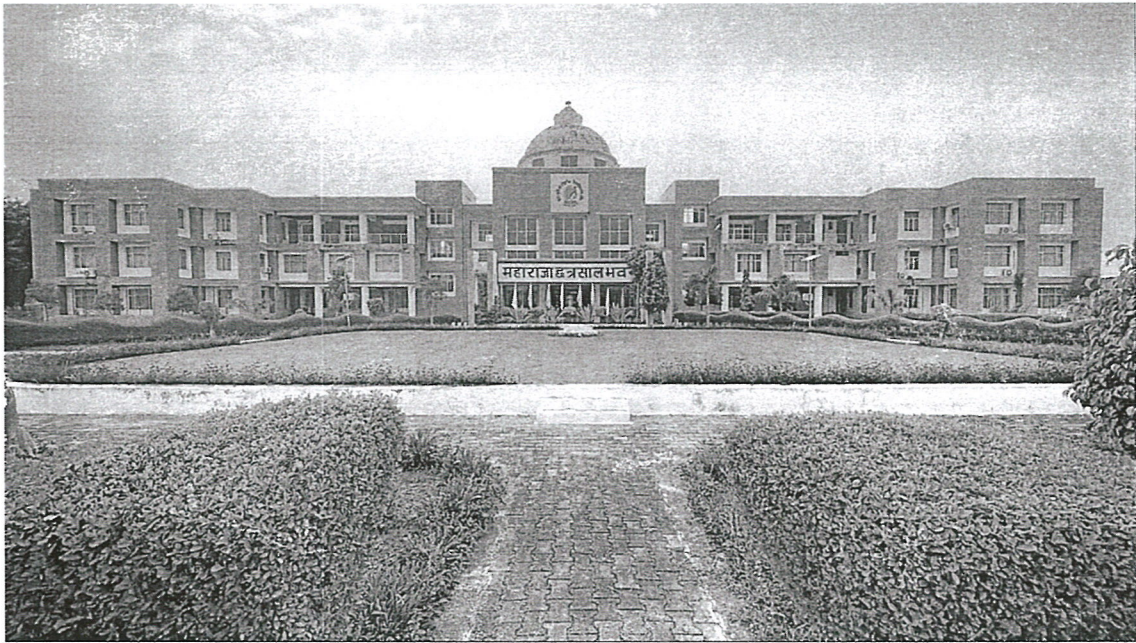


POLICY FOR DIVYANGJAN



Prepared By:

Dr. A.K. Chaubey

Dr. Diksha Gautam

Dr. Abhishek Yadav

(S.K. Singh)

Registrar

Banda University of Agriculture & Technology

Banda-210001

Page No. ① of ①

Diksha

(Diksha Gautam)

(A.K. CHAUBEY)

CONTENTS

1. Policy for divyangjans
2. Objectives
3. Disability
4. Qualified disability person
5. Accessibility policy
6. Examination policy
7. Accessibility and access audit for divyangjan

Page No. 2 of 64

Akchaubey
(A.K. CHAUBEY)

Diksha
(Diksha Gautam)

Madh
(A.K. Madh)


(S.K. Singh)
Registrar
Banda University of Agriculture & Technology
Banda-210001

1. POLICY FOR DIVYANGJANS

In February 2006, the Government of India launched a national policy for persons with disabilities which deal with educational rehabilitation of persons with disabilities. Banda University of Agriculture & Technology, Banda opposes all forms of discrimination, including disability discrimination. The University intends to advance a comprehensive and inclusive teaching and learning environment in which disabled students and employees are not displeased or treated adversely. The University strives to make its programs, administrations, and activities available to students. All of the University's authorities are working hard to extend a helping hand to the differently abled in order to ensure the benefits of ground programs, administrations, and activities. Therefore, Banda University of Agriculture & Technology, Banda has introduced Divyangjan policy with following objectives:

2. OBJECTIVES

- To create a culture that is inclusive, non-discriminatory, non-exploitative for all in all spheres of work and education.
- To develop a suitable regulatory framework for the effective delivery of services to University Disabled Students and Staff.
- To ensure implementation of all legislations with respect to persons with disabilities.
- The University's mission is to provide accessible and inclusive education.
- To ensure full participation and equal opportunities for development for people with disabilities.
- To provide necessary budget allocation to achieve above objectives.
- Facilities are provided time to time as per government rules.
- To ensure the awareness programmes for all the teaching and nonteaching staff regarding the issues of accessibility.

3. DISABILITY

The term "disability" encompasses both motor and sensory limitations (e.g., mobility, vision, or hearing impairments). It also includes disabilities caused by chronic illnesses and syndromes, as well as invisible disabilities like psychological and emotional disorders, learning disabilities, heart disease, asthma, epilepsy, Acquired Brain Injuries (ABI), and Acquired Immune Deficiency Syndrome (AIDS). Because many disabilities vary in severity and type of limitation, accommodations must also vary and be tailored to the individual's needs. (Chapter I, Rights of Persons with Disabilities Act, 2016)

4. QUALIFIED DISABILITY PERSON

The phrase "qualified individual with a disability" refers to a disabled person who is qualified to participate in university program or activity. Enrollment requires a certified individual with a disability to meet the scholastic guidelines required for affirmation as well as the scholarly

(S.K. Singh)

Registrar

Banda University of Agriculture & Technology

Banda-210001

(A.K. CHAUBEY)

Page No. ③ of ④

Diksha

C Diksha Gautam

A.K. Chaubey

requirements set up for any given course, degree, or certificate program. A qualified individual with a disability must be able to perform the minimum essential functions of the job when it comes to employment, training, work assignments, and promotion. However, relaxation will be permitted in accordance with government regulations.

5. ACCESSIBILITY POLICY:

The University should make various provisions in order to create a disabled-friendly campus. The university's administration and faculty members should make appropriate/reasonable accommodations for all people with disabilities and be willing to work with them to solve access issues. The campus should be barrier-free and accessible to people with disabilities.

The following accessibility principles will be strictly followed:

- All undergraduate and graduate programmes and activities must be accessible.
- All students with disabilities will have access to accessible textbooks and study materials.
- To ensure that all teachers and non-teaching staff are aware of issues concerning accessibility.
- The University's admission policy should provide a 5% reservation for people with disabilities.
- The University's admission policy should provide 5-year age relaxation for people with disabilities in all of the University's courses.
- The University will ensure that all types of disabilities are represented, as listed in the Rights of Persons with Disabilities 2016 and as government regulations alter.

6. EXAMINATION POLICY

To meet the specific needs of students with disabilities, Banda University of Agriculture & Technology, Banda will make reasonable changes to the educational plan and assessment framework. Sensible accommodations will be made to meet the needs of the large number of students with disabilities. The examination department has issued guidelines and regulations for the use of scribes in exams.

7. ACCESSIBILITY AND ACCESS AUDIT FOR DIVYANGJAN

- Employee and student facilities are available.
- In university campus each college must have a ramp on entrance including wheelchair facility that is accessible to people with disabilities.
- In each college disability friendly washroom must be available on all floors for easy access to people with disabilities.
- According to government regulations, facilities are provided on a regular basis.
- The University provides a barrier-free environment for people with disabilities.

Page No. ④ of ④

(A.K. Yadav)

Diksha
(Diksha Gautam)

(S.K. Singh)
Registrar
Banda University of Agriculture & Technology
Banda-210001
(A.K. Chauley)